

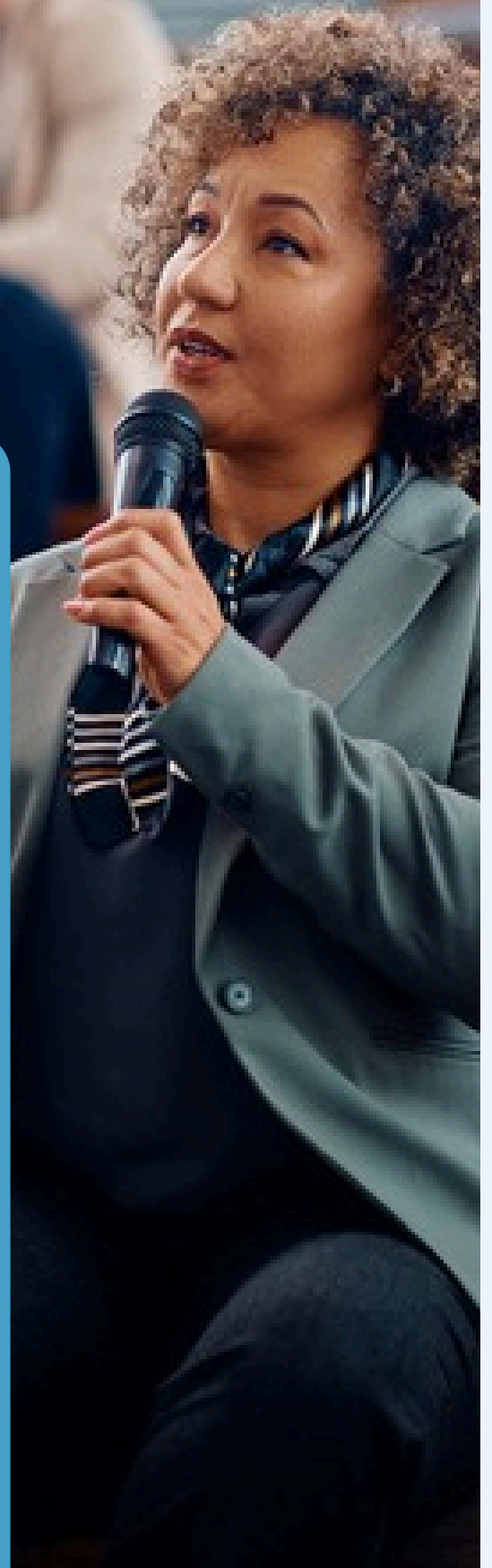


INTERNATIONAL
SOCIAL CAPITAL
ASSOCIATION

WEBINAR SERIES IMPACT REPORT 2021–2026

Connecting the Global Social Capital
Community Through Learning, Dialogue,
and Collaboration

June 2026



In This Report

When the International Social Capital Association launched its webinar series in 2021, our goal was simple: to create an accessible international space where people interested in social capital could learn, exchange ideas, and build connections.

Since then, the series has grown into a global community of researchers, practitioners, policymakers, and community leaders exploring how social relationships shape individuals, organisations, and societies.

This report highlights the impact of the webinar series and the value it creates. The evaluation demonstrates high levels of participant satisfaction, meaningful learning outcomes, and a strong contribution to the development of the field.

At a time when trust, social cohesion, and social connection are receiving increasing attention worldwide, these findings reinforce the importance of creating accessible spaces for learning, dialogue, and collaboration.

This success has been made possible through the generosity of our speakers, volunteers, members, participants, and supporters. We thank everyone who has contributed to building this international community and look forward to working together to expand its reach and impact in the years ahead.

- 01 Executive Summary
- 02 Why This Webinar Series Exists
- 03 Featured Presenters
- 04 Growth of the Series
- 05 A Global Community
- 06 Learning and Professional Impact
- 07 Building the Field of Social Capital
- 08 Stories of Impact
- 09 Participant Experiences and Outcomes
- 10 Looking Ahead
- 11 Partnering to Expand Impact
- 12 Conclusion



Tristan Claridge
President
International Social Capital Association

Executive Summary

5
Years

212
Events

160
Countries

22,550
Registrations

WHO PARTICIPATES?

- Researchers
- Practitioners
- Students
- Consultants
- Policymakers
- Community Leaders

WHAT PARTICIPANTS VALUE

- High-Quality Speakers
- Diverse Perspectives
- Global Reach
- Accessibility
- Discussion and Interaction
- Relevance to Research and Practice

BUILDING THE GLOBAL SOCIAL CAPITAL COMMUNITY

This evaluation shows that the series has become a valued resource for researchers, practitioners, policymakers, students, and community leaders worldwide.

Participants report high levels of satisfaction and consistently highlight the quality of speakers, diversity of perspectives, and opportunities for learning and discussion.

Participants expressed interest in more interactive formats, including workshops, networking opportunities, thematic series, and practitioner-focused sessions. There was also strong support for expanding participation and collaboration internationally.

With continued support and partnerships, the webinar series can play an even greater role in advancing the understanding and application of social capital worldwide.

PARTICIPANT VOICES

“ A unique international forum dedicated to social capital. ”

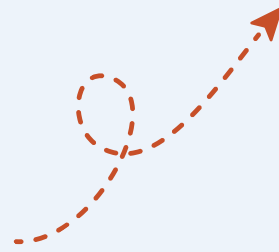
“ The series has broadened my understanding and introduced me to new perspectives. ”

“ One of the few places where researchers and practitioners can engage directly. ”

LOOKING FOWARD

- More Interactive Workshops
- Networking Opportunities
- Thematic Learning Series
- Practitioner-Focused Sessions
- Expanded Global Participation

Why This Webinar Series Exists



Social capital is widely recognised as central to community wellbeing, organisational performance, social cohesion, and collective action. Across fields such as public health, education, and economic development, relationships, trust, and social connection are seen as essential. Yet international dialogue has remained limited, with efforts often fragmented across disciplines and regions.

To address this, the International Social Capital Association launched its webinar series in 2021 as an accessible global platform for researchers, practitioners, policymakers, and community leaders to exchange ideas and build connections. By reducing financial and geographic barriers, the series has attracted participants from diverse sectors worldwide.

What began as a simple initiative has become a recognised international platform for learning and collaboration. It has covered a wide range of topics, from theory and measurement to health, governance, resilience, and community development, enabling participants to engage with diverse perspectives and shared themes.

The series has grown amid rising global concern about trust, belonging, and social cohesion. Its success is reflected in its expanding audience and the collaborations it has fostered, with participants forming ongoing connections, partnerships, and knowledge exchange.

Today, it is valued not just as a learning platform, but as a global forum advancing the understanding and application of social capital.

Audience Growth

From 2020 to 2026



2,850

New audience in the last year

Audience total in six years

10,065

94% would recommend the series

91% said the webinars improved their understanding

Featured Presenters

Speakers have included internationally recognised scholars, practitioners, policy leaders and innovators.



Professor Robert D. Putnam
A reflection on 30 years of social capital research and "The upswing"
May 2021



Associate Professor Tristan Claridge
Exploring the theoretical foundations and meaning of social capital
April 2022



Professor Daniel Aldrich
The Role of Social Ties in Shocks and Crises
July 2021



Dr Geeta Mehta
Building Social Capital by Design
November 2025



Professor Troy Glover
Exploring the Endogenous and Exogenous Pathways of Social Capital
October 2021



Professor Lindon J. Robison
What do triads reveal about social capital?
April 2024



Dr Annahita Ehsan
Social Capital and Community Mental Health Promotion
November 2021



Professor Carlos Vignolo
Building Social Capital: A system engineering approach
November 2024



Professor Irene van Staveren
Social Cohesion and Covid around the world
February 2022



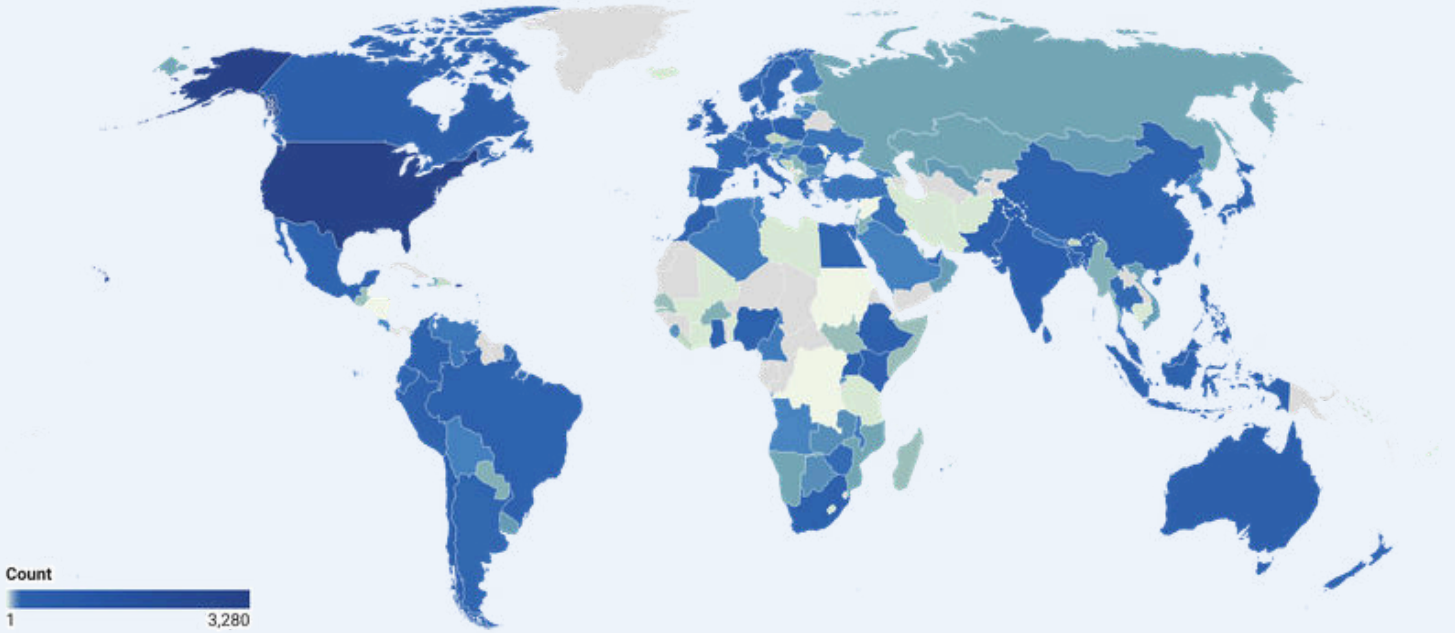
Professor Dame Heather McGregor
Connections to Careers: How Social Capital Accelerates Progress
January 2026

A Global Community

A defining strength of the ISCA Webinar Series is its ability to bring together people from different countries, disciplines, and sectors around a shared interest in social capital.



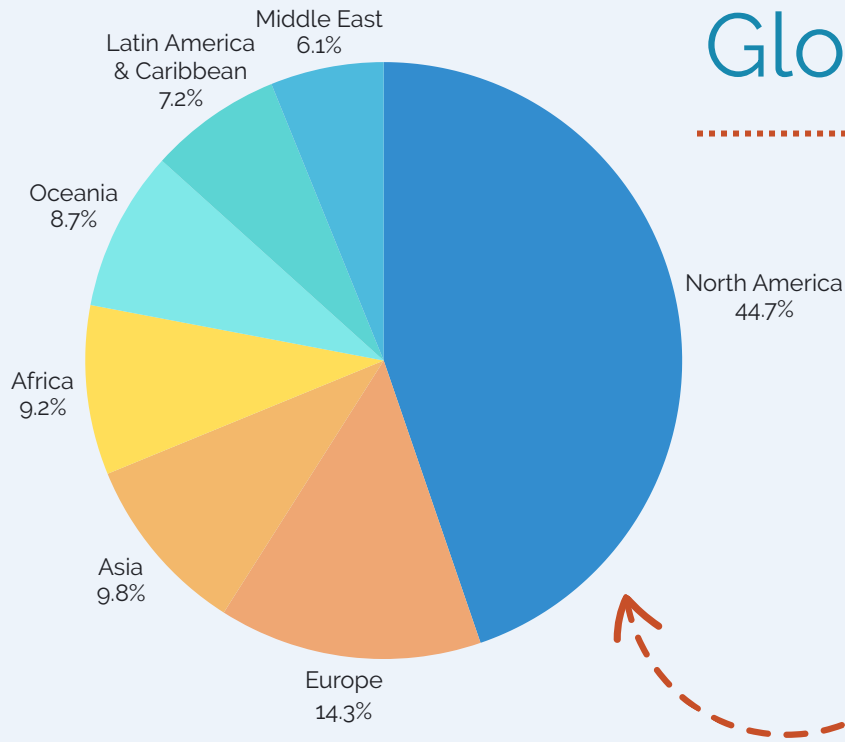
ISCA Webinar Audience



Map: International Social Capital Association • Created with Datawrapper



Global Regions



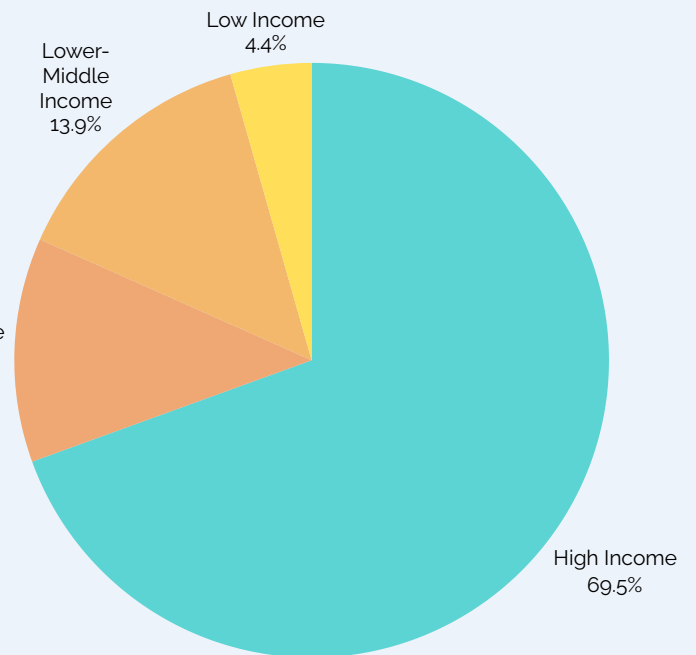
The evaluation showed that participants come from across North America, Europe, Africa, Asia, Oceania, and South America, highlighting the program's international reach.

This diversity enriches discussions by exposing participants to different social, cultural, and policy contexts while revealing common challenges and shared insights.

Country Income-levels

Although the audience spans more than 160 countries, it is dominated by high income countries. Only 30% were in low- and middle-income economies, with less than 5% from low-income countries.

Upper-Middle Income
12.2%



**Based on World Bank country classifications*



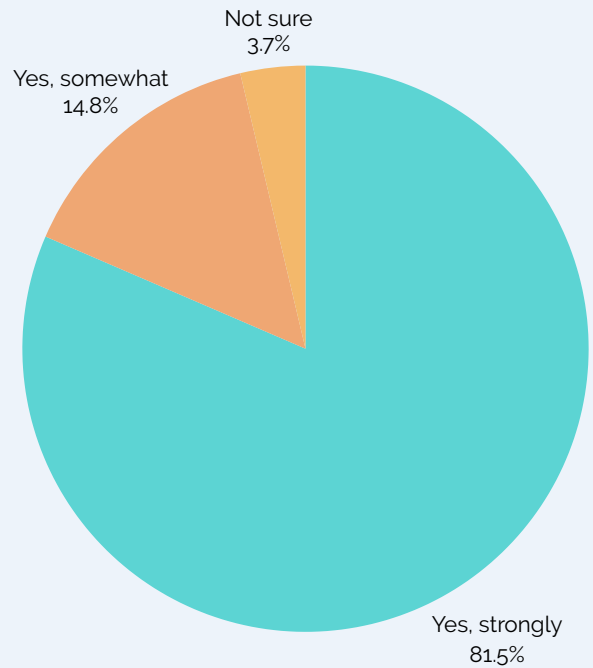
Connecting People, Ideas, and Practice

The series attracts a diverse international audience, including researchers, students, consultants, policymakers, community practitioners, organisational leaders, and professionals from government, business, and civil society.

This diversity is one of its greatest strengths, creating opportunities for researchers and practitioners to learn from one another and helping bridge the gap between research and practice.

The webinar series also serves as an important gateway into the wider social capital community, introducing many non-members to ISCA and fostering new professional connections.

By bringing together diverse voices from around the world, it has established itself as a unique international forum for advancing dialogue, collaboration, and the application of social capital.



Do you see this series as contributing to the broader development of the field of social capital?



Learning and Professional Impact

The ISCA Webinar Series exists to support learning, and the evaluation shows it is achieving this goal.

Participants consistently reported that the series has strengthened their understanding of social capital, introduced new ideas and perspectives, and supported their professional and academic development.

Researchers gain exposure to scholarship from different disciplines and regions, while practitioners benefit from practical insights and real-world applications.

Together, these perspectives help bridge the gap between research and practice.

Learning extends beyond the presentations themselves. Question-and-answer sessions and discussions encourage participants to explore ideas in greater depth, engage directly with speakers, and learn from one another.

This exchange of knowledge across disciplines, sectors, and countries creates a rich and collaborative learning environment.

The webinar series helps participants...

- ✓ Develop research ideas
- ✓ Improve understanding of social capital
- ✓ Discover emerging research
- ✓ Apply social capital in practice
- ✓ Connect ideas across disciplines
- ✓ Support teaching and policy

Overall, the findings show that the webinar series has become a trusted source of learning and professional development, providing accessible opportunities for knowledge exchange throughout the year.

To what extent has the series improved your understanding of social capital?



Building the Field of Social Capital

Because social capital spans many disciplines, researchers and practitioners can sometimes struggle to connect and share knowledge. Our community is located in different countries and in different institutions.

The webinar series helps address this challenge by providing an international space where people from diverse backgrounds can explore common themes such as trust, relationships, cooperation, and social wellbeing.

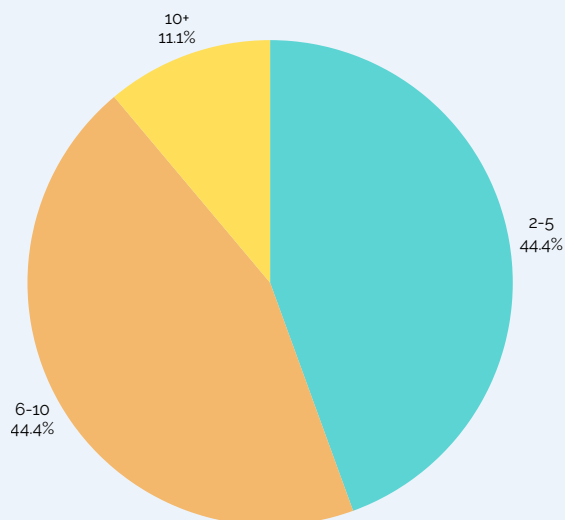
Participants valued the opportunity to learn from experts, engage with different perspectives, and connect with others working in the field.

Many also reported building professional relationships and continuing conversations beyond the webinars.

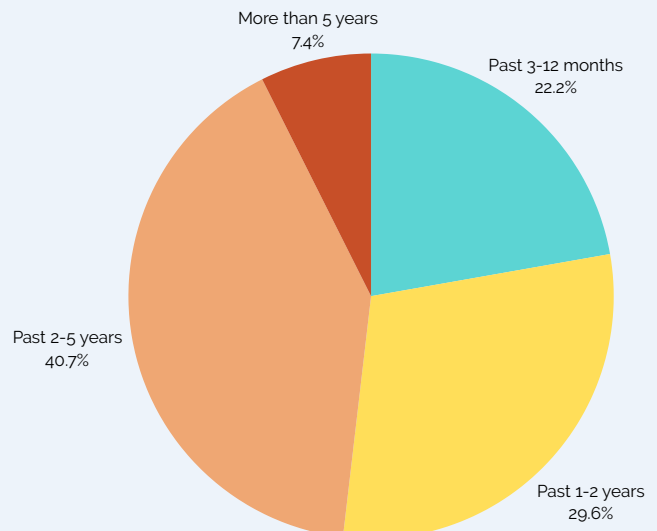
Overall, participants see the series as more than a source of information. It serves as a platform for dialogue, connection, and collaboration, helping to strengthen the global social capital community.

“ The series introduced me to more coherent and substantive frameworks for social capital, which I am using to better ground my current research. Additionally, seeing other researchers presenting on similar topics has introduced me to new resources and expanded my thinking about my own work. The series also connected me with other scholars and conference opportunities. ”

Approximately how many ISCA webinars have you attended?



Over what period have you engaged with our webinars?



Stories of Impact



From Research to Classroom Impact

Edith Ornellas, a university professor and researcher specializing in social capital in Brazil, combined her existing expertise with insights gained from ISCA webinars starting in 2022. She decided to pursue a degree in Education (Pedagogy) and, since 2024, has been applying this knowledge while working with primary school children (grades 1–5) in public schools across both rural and urban areas of her hometown, Feira de Santana, Bahia, Brazil. This work has inspired other school communities to improve their local environments.



Research Through Global Connections

Raymund Piñon, a PhD candidate in Development Studies in the Philippines, discovered ISCA after the COVID-19 pandemic while looking to deepen his understanding of social capital and strengthen his research skills. The ISCA webinar series exposed him to a broad range of research directions and helped refine the focus of his dissertation. In particular, it shaped his interest in applying social network analysis to entrepreneurial ecosystems. Raymund also benefited from access to ISCA's international network of experts, who generously shared their knowledge and resources, helping to accelerate his learning and strengthen his research. He is now in the final stages of his dissertation.



From Learning to Community Practice

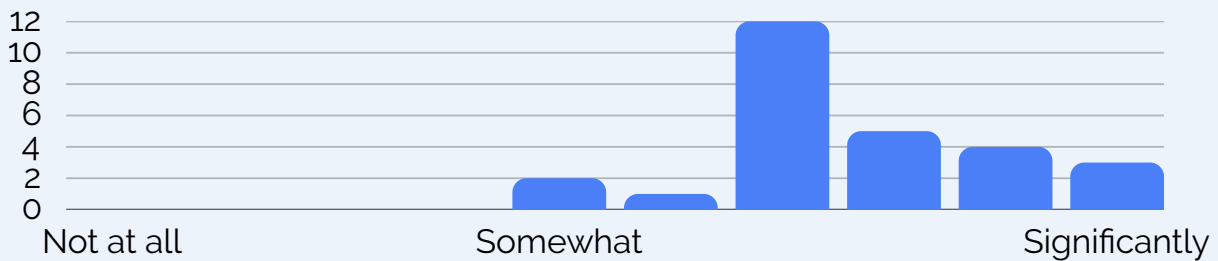
Shirley Hutter discovered ISCA while completing her Master's in Community Development at the University of Applied Sciences Utrecht, after finding the organisation's website in her search to learn more about social capital research. She joined the webinars and later became one of ISCA's founding members. The sessions were particularly valuable during the COVID period, bringing together participants from Australia, Syria, South Africa, Canada, and many other countries. The diversity of perspectives deepened her understanding of social capital and provided practical insights that she has since applied in her neighbourhood research and community development work. Shirley values the quality of the discussions and the international community that Tristan and the ISCA team have built, and warmly recommends ISCA to anyone interested in advancing their understanding of social capital.

Participant Experiences and Outcomes

Overall, how would you rate the webinar series?



To what extent does the series cover the range of topics you would like to see?



How effective has the series been in presenting diverse perspectives (academic, practical, global)?



Participant Voices

“ Every webinar leaves me with at least one new idea I can apply immediately in my work. ”

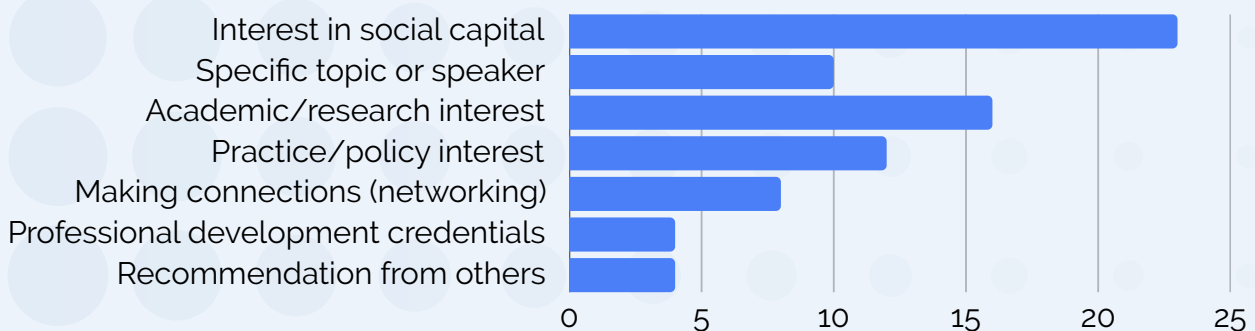
“ These webinars do more than share knowledge; they create connections across countries, disciplines, and sectors. ”

“ The webinar series demonstrates social capital in action by bringing people together around a shared purpose. ”

“ The series has become one of the few places where researchers and practitioners genuinely learn from each other. ”

“ What keeps me coming back is the diversity of perspectives—every session broadens my understanding of social capital. ”

What initially motivated you to attend?



What Participants Value Most

Participants consistently value the quality of speakers and the diversity of perspectives, with participants appreciating the opportunity to learn from leading researchers, practitioners, and emerging voices from around the world.

Respondents also valued the international reach of the series, its accessibility, and the opportunity to engage with people from different disciplines, sectors, and countries.

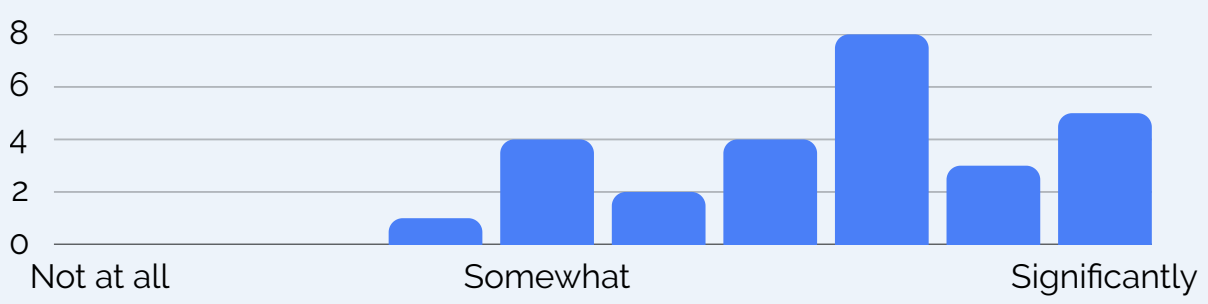
Discussion and interaction were highlighted as important features that enriched learning, while many participants appreciated the balance between research and practice, making the content relevant to both academics and practitioners. Participants also valued the continuity of the series, describing it as an ongoing source of learning, new ideas, and professional connection throughout the year.

Together, these strengths have established the webinar series as a trusted international platform for learning, dialogue, and collaboration around social capital.

Top Strengths...

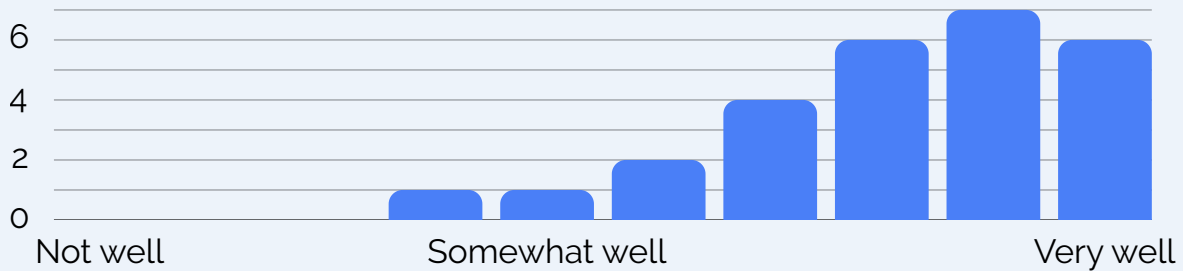
- ✓ High-quality speakers
- ✓ Diverse perspectives
- ✓ International participation
- ✓ Accessible online format
- ✓ Discussion and interaction
- ✓ Balance of research and practice
- ✓ Ongoing learning throughout the year
- ✓ Professional connections and networking

How useful has the series been for your professional or academic development?

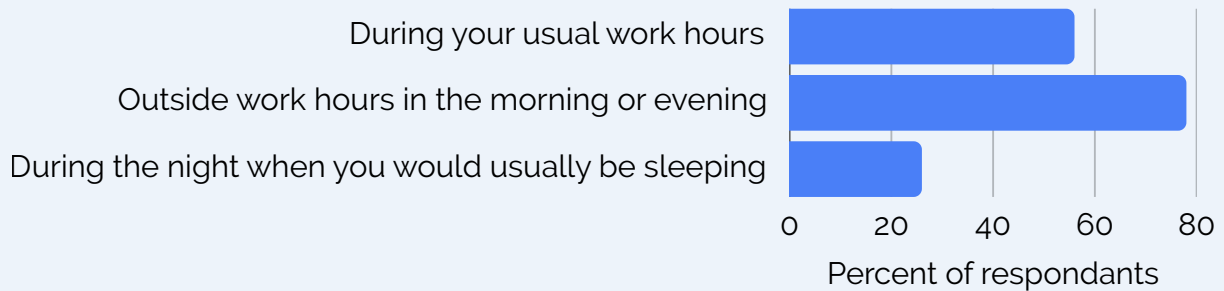


How the Series is Experienced

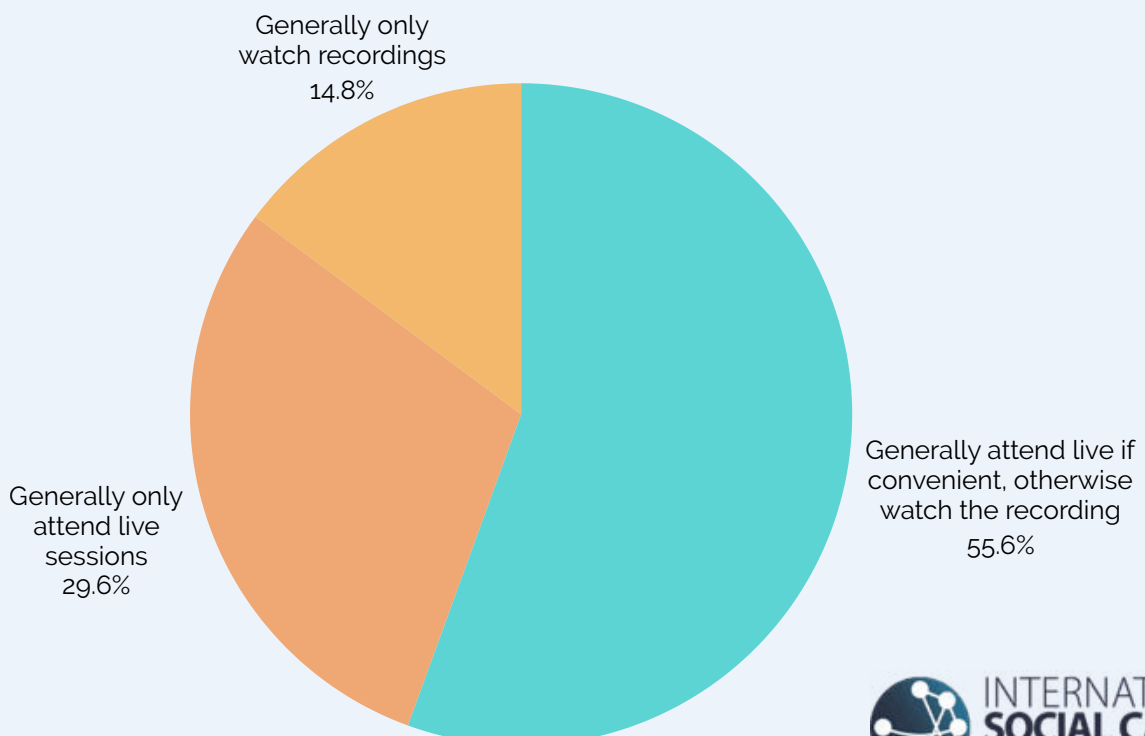
How well does the current format (online, timing options, repeat sessions) work for you?



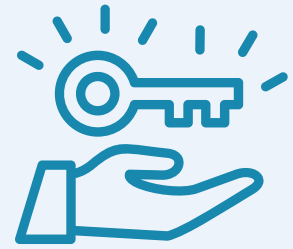
Have you attended webinars at different times of day?



How do you typically participate?



Looking Ahead: Opportunities for Growth and Development



The evaluation shows that the webinar series is delivering strong value while also highlighting opportunities for growth.

Participants most commonly requested greater interaction and engagement, including workshops, roundtables, facilitated discussions, and networking opportunities that encourage dialogue with speakers and peers.

There was also interest in more structured learning pathways, such as thematic series that explore topics across multiple sessions, as well as stronger links between research and practice through case studies and real-world examples.

Respondents highlighted the importance of broadening participation by including more voices from underrepresented regions and diverse professional backgrounds.

They also identified opportunities to enhance accessibility through expanded resources and ongoing engagement between events.

Many participants saw potential for the webinar series to play a larger role in fostering collaboration, helping to build partnerships, research initiatives, and communities of practice.

Importantly, these opportunities build on an already successful foundation. Participants consistently value the series' high-quality speakers, diverse perspectives, accessibility, and international reach. Overall, the findings suggest a trusted platform with significant potential for future impact.

Greater Interactivity

Many respondents expressed interest in more interactive formats, including workshops, facilitated discussions, networking sessions, and collaborative learning activities.

Structured Learning Pathways

There was substantial interest in multi-session themes, short courses, and more structured learning experiences that allow deeper exploration of specific topics over time.

Broader Geographic Representation

Participants expressed interest in hearing more perspectives from different world regions, particularly Africa, Asia, and Latin America.

Applied and Practice-Oriented Content

Respondents indicated a desire for additional case studies, practical applications, and examples demonstrating how social capital concepts can be implemented in real-world settings.

Partnering to Expand Impact



The evaluation demonstrates that the ISCA Webinar Series delivers meaningful value to participants while strengthening the global social capital community.

As interest in social capital continues to grow, so too does the need for accessible international platforms for learning, dialogue, and collaboration.

The success of the series has been made possible through the contributions of speakers, volunteers, members, and supporters. Looking ahead, partnerships will be essential to expanding its reach and impact.

Supporting the webinar series is an investment in global knowledge exchange.

Nearly 60% of respondents indicated they would attend more events if they were held more frequently, indicating a strong need for expanding the series.

It enables researchers and practitioners to share ideas, build international collaborations, and strengthen the evidence and practice of social capital.

Together, we can ensure the series remains an accessible, high-quality platform that advances understanding and application of social capital worldwide.

The International Social Capital Association welcomes conversations with organisations and individuals who share this vision.

Help build the world's leading international learning platform dedicated to social capital.

Additional support will enable the webinar series to:

- ✓ Expand participation from underrepresented regions and lower-income countries.
- ✓ Develop more interactive workshops and discussion-based events.
- ✓ Create thematic series that explore important issues in greater depth.
- ✓ Improve accessibility through improved recordings, captions, and supporting resources.
- ✓ Strengthen opportunities for networking and collaboration between participants.
- ✓ Increase the frequency and reach of webinars, bringing leading expertise to a wider global audience.

Conclusion

Since its launch in 2021, the ISCA Webinar Series has evolved from a simple online program into a recognised international platform for advancing the understanding and application of social capital.

The evaluation demonstrates that the series is delivering meaningful impact. Participants consistently report enhanced learning, exposure to new ideas, valuable professional connections, and opportunities to engage with a diverse international community. Beyond these individual benefits, the webinar series is strengthening the field itself by connecting researchers, practitioners, and policymakers across disciplines, sectors, and countries.

As global interest in social capital continues to grow, so too does the need for accessible spaces where ideas can be shared, collaborations can emerge, and research and practice can inform one another. The webinar series is helping to meet that need.

This achievement has been made possible through the generosity of speakers, participants, volunteers, members, partners, and supporters who have helped build a vibrant global community of learning and exchange.

The evaluation confirms that the webinar series is creating lasting value today while providing a strong foundation for future growth. We invite researchers, practitioners, institutions, partners, and supporters to join us in expanding this global community and advancing the understanding and application of social capital worldwide.

The story of the webinar series is ultimately a story of people learning from and connecting with one another—and that story is only just beginning.

5 Years

212 Events Held

160 Countries Represented

22,550 Participant Registrations

94% Recommend the Series

91% Improved Understanding

9.3/10 Overall Satisfaction

8.5/10 Overall Accessibility

78% Attend Outside Work Hours

8.8/10 Engagement & Interactivity

58% Want Even More Events

96% Series Contributes to the Field

75% Want More Interactive Events

8.9/10 Presenting Diverse Perspectives

70% Participants Return

74 Workshops Conducted



We thank you for your ongoing support of our series

Get Involved

The success of the ISCA Webinar Series has been built through the contributions of speakers, participants, volunteers, members, and partners from around the world. We welcome individuals and organisations who share our commitment to advancing the understanding and application of social capital.

Attend

Join our growing international community by participating in upcoming webinars. Learn from leading researchers and practitioners, engage in discussion, and connect with others working across disciplines, sectors, and countries.

Present

We welcome proposals from researchers, practitioners, policymakers, consultants, and community leaders who are advancing knowledge or practice relating to social capital. Sharing your work helps strengthen the global conversation.

Support

The webinar series is provided as an accessible international resource for the global social capital community. Sponsorship and philanthropic support enable us to expand participation, improve accessibility, develop new webinar formats, support speakers, and increase engagement with researchers and practitioners worldwide.

Contact

We welcome enquiries about presenting, partnering, sponsoring, or participating in the webinar series.

Tristan Claridge
President, International Social Capital Association
Email: tristan@intsocialcapital.org



**International Social Capital
Association Inc.**
www.intsocialcapital.org
admin@intsocialcapital.org